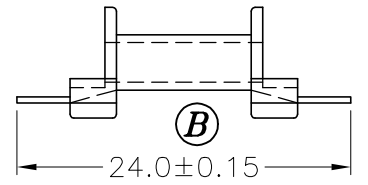
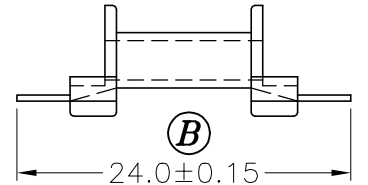


DRAWING NO.	MATERIAL:	ORIGIN:
S-1501-5	PM9630	DG SZ



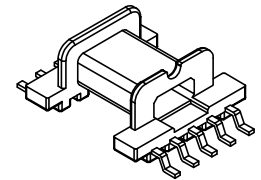
B-026.101P(B-026&B-026-1)

DRAWING NO.	MATERIAL:	ORIGIN:
S-1501-4	LCP E4008	DG SZ

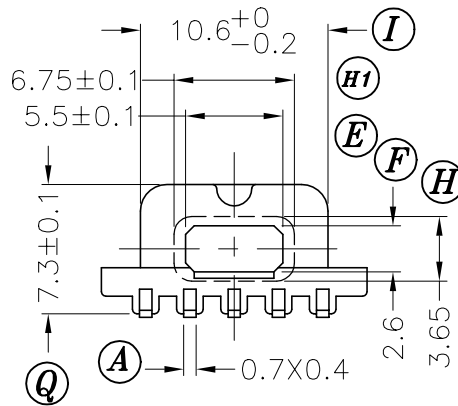
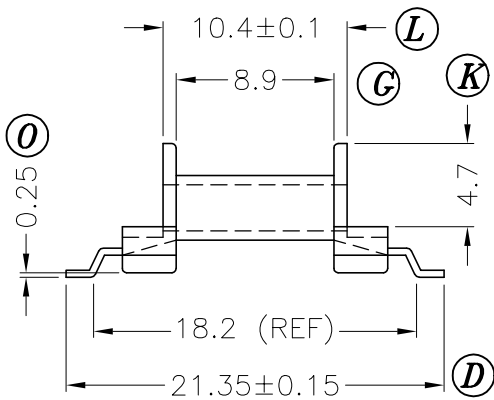


B-026.101L(B-026&B-026-1)

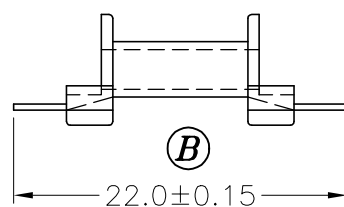
DRAWING NO.	MATERIAL:	ORIGIN:
S-1501-3	PM9630	DG SZ



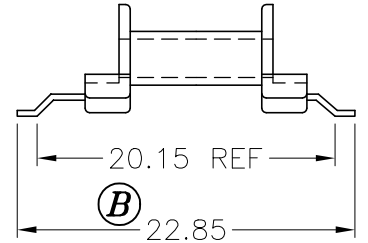
B-027.101P(B-027)



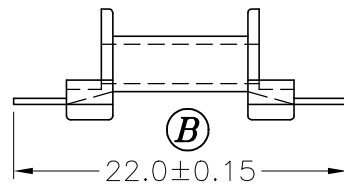
DRAWING NO.	MATERIAL:	ORIGIN:	DRAWING NO.	MATERIAL:	ORIGIN:
S-1501-7	PM9630	DG SZ	S-1501-2	LCP E4008	DG SZ



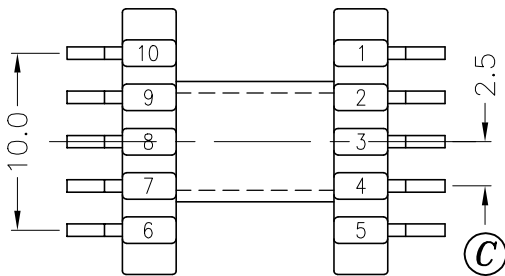
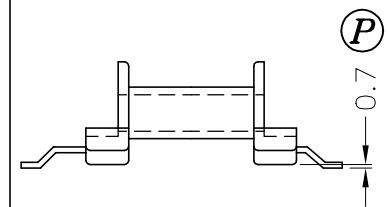
B-026.102P(B-026&B-026-1)



DRAWING NO.	MATERIAL:	ORIGIN:	DRAWING NO.	MATERIAL:	ORIGIN:
S-1501-6	LCP E4008	DG SZ	S-1501-1	LCP E4008	DG SZ



B-026.102L(B-026&B-026-1)



B-027.101L(B-027)

REV.	REVISIONS	REC.	REV.	REVISIONS	REC.
1	PIN TENSION LOAD 1.0KG->1.5KG; UPDATE DRAWING				

DRAWN & DRAFTED BY WANG CHENG	TOLERANCES		ANGLE: ±1°	TITLE: SMD BOBBIN EFD-15	
	0<L≤4 ±0.1	COPLANARITY 0.1 MAX	UNIT: MM	BOBBIN MATERIAL: LCP E4008	UL REC. UL 94V-0
CHECKED & APPROVED BY JOHN RONG	4<L≤16 ±0.2		ORIGIN: DG SZ	PIN MATERIAL: PHOSPHOR BRONZE	PIN TENSION LOAD: 1.5KG MIN.
	16<L≤63 ±0.3		DATE: APR.04 '2003	DRAWING NO. S-1501	REV. 1



PIN SHINE INDUSTRIAL CO.,LTD.

TEL:886-2-22990545

FAX:886-2-22990546

